

Key Features



640 x 480 Resolution, 12µm



60Hz Refresh Rate



Automatic Shutter Calibration



4 Polarity Modes



Region of Interest Optimization



Internal Memory for Image Capture



IP67 Waterproof Rating



USB Power/Analog Video Output

White

Black

Edge

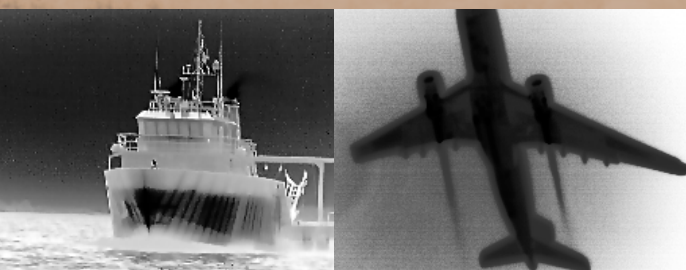
Color



ATLAS

THERMAL BINOCULARS

ULTRA HIGH PERFORMANCE
THERMAL BINOCULARS



Outdoors

Marine

Security

Security

Recognize and observe targets in complete darkness and in adverse weather conditions. ATLAS is the ideal tool for surveillance and security professionals.

220-26 Reservoir Street, Needham, MA 02494
PH: 781.505.8360 info@nvisionoptics.com
www.nvisionoptics.com

ATLAS

THERMAL BINOCULARS



25mm f1.1

- 17.5° x 13° Field of View
- 25mm f1.1 Germanium Lens
- Detection Range 1120yd



50mm f1.2

- 9° x 7° Field of View
- 50mm f1.2 Germanium Lens
- Detection Range 2020yd

25mm 50mm

	25mm	50mm
FIELD OF VIEW	18° x 14°	9° x 7°
OBJECTIVE	25mm f1.1 Germanium	50mm f1.2 Germanium
RESOLUTION	640 x 480	
SENSOR PIXEL SIZE	12µm	
DISPLAY TYPE	Dual Color LCD	
SPECTRAL RESPONSE	7.5 - 13.5µm	
REFRESH RATE	60 Hz	
ENVIRONMENT	IP67	
BATTERIES	3x CR123	
OUTPUT	USB and Analog	
LENGTH	5.5" (140mm)	5.9" (148mm)
WIDTH	4.9" (125mm)	4.9" (125mm)
HEIGHT	2.4" (61mm)	2.4" (61mm)
WEIGHT	18.5oz (525g)	20.3oz (575g)



The **ATLAS** Thermal Binoculars are the perfect tool for serious wildlife enthusiasts, hunters, mariners, security professionals, and search and rescue operators. Adventure through any habitat and be confident that you will locate and identify what you seek. Be bold and effective in any scenario with the **ATLAS** Thermal Binoculars.

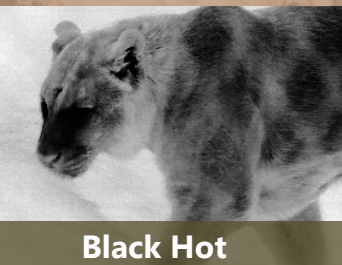
Scratch-Resistant
AR Coated Windows



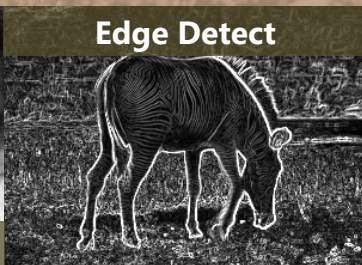
Soft Mold-in Eye Cups for
Added Comfort

USB External Power/
Analog Video Output

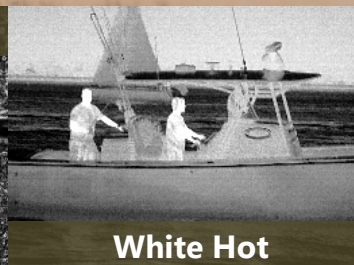
Dual 800x600 High Res
Color Displays



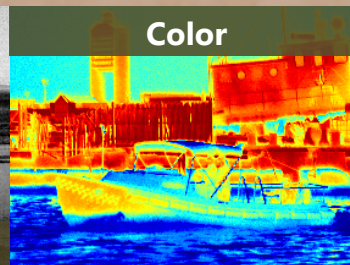
Black Hot



Edge Detect



White Hot



Color



Outdoor/Wildlife

Adventure through any habitat and be self-assured that you will locate the wildlife you seek. Increase your counts day or night in any weather. Identify, photograph, and pursue various animals with a simple scan of your environment.

Maritime

Enables users to detect heat signatures in the water, maintain visual contact, and accurately guide their crew in man overboard recovery operations. ATLAS permits users to readily detect and identify obstacles, navigational markers, and vessels running dark.

- Kit Includes:
- Rugged Carrying Case
 - USB Cable for Download
 - Neck Strap
 - Lens Cover
 - Lens Cleaning Kit
 - Quick Reference Guide